

Discharge Measurement Summary

Site name Center3
Site number 04
Operator(s) VAllen
File name Center3_20230519-111102.ft
Comment

Start time	5/19/2023 9:52 AM	Sensor type	Top Setting
End time	5/19/2023 11:06 AM	Handheld serial number	FT2H2219029
Start location latitude	43.029	Probe serial number	FT2P2219014
Start location longitude	-118.842	Probe firmware	1.30
Calculations engine	FlowTracker2	Handheld software	1.7

# Stations	Avg interval (s)	Total discharge (m³/s)
24	40	0.4682

Total width (m)	Total area (m²)	Wetted Perimeter (m)
7.224	4.33820	7.608

Mean SNR (dB)	Mean depth (m)	Mean velocity (m/s)
43	0.601	0.1079

Mean temp (°C)	Max depth (m)	Max velocity (m/s)
13.984	0.872	0.1487

Discharge Uncertainty		
Category	ISO	IVE
Accuracy	1.0%	1.0%
Depth	0.1%	1.2%
Velocity	0.2%	1.7%
Width	0.1%	0.1%
Method	0.9%	
# Stations	2.1%	
Overall	2.5%	2.3%

Discharge equation	Mid Section
Discharge uncertainty	IVE
Discharge reference	Rated

Data Collection Settings	
Salinity	0.000 PSS-78
Temperature	-
Sound speed	-
Mounting correction	0.000 %

Summary overview

No changes were made to this file
Quality control warnings



Discharge Measurement Summary

Site name Center3
Site number 04
Operator(s) VAllen
File name Center3_20230519-111102.ft
Comment

Station Warning Settings

Station discharge OK

Station discharge < 5.00%

Station discharge caution

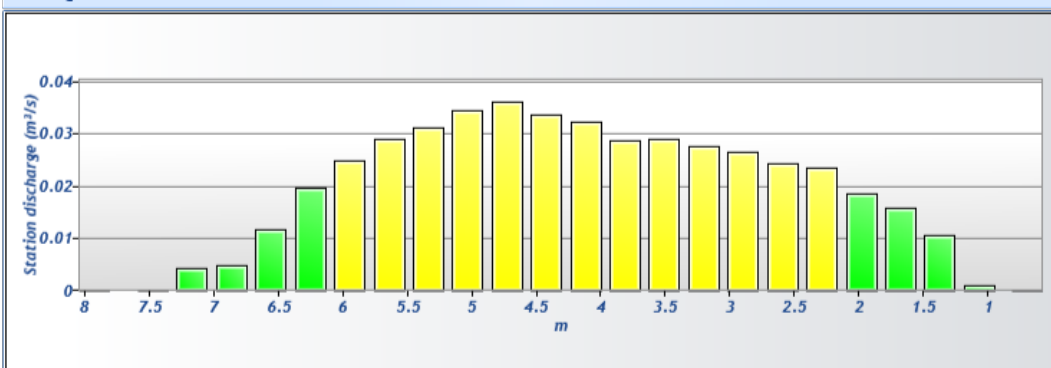
5.00% >= Station discharge < 10.00%

Station discharge warning

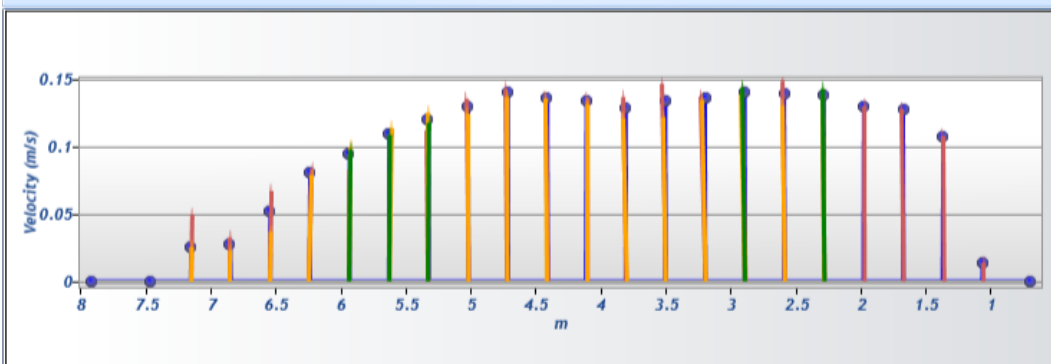
Station discharge >= 10.00%



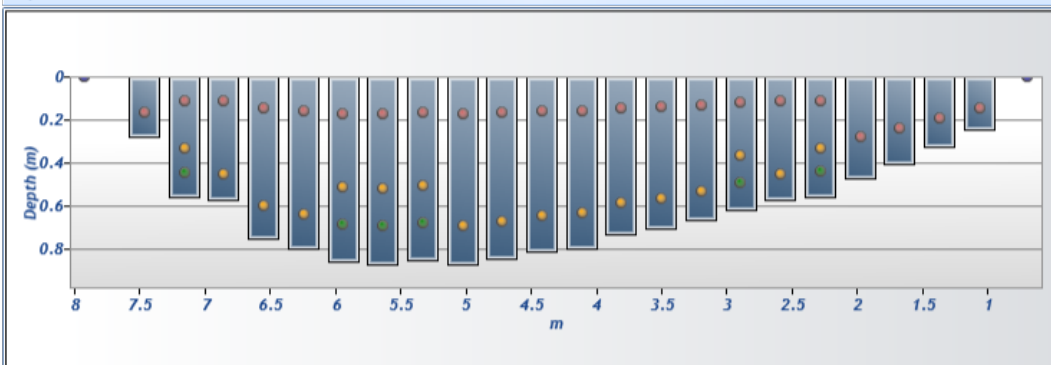
Discharge chart

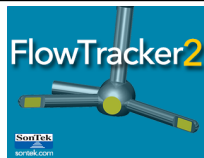


Velocity chart



Depth chart

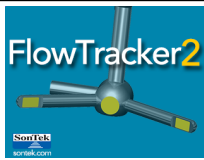




Discharge Measurement Summary

Site name	Center3
Site number	04
Operator(s)	VAllen
File name	Center3_20230519-111102.ft
Comment	

Measurement results													
St#	Time	Location (m)	Method	Depth (m)	%Depth	Measured Depth (m)	Samples	Velocity (m/s)	Correction	Mean Velocity (m/s)	Area (m ²)	Flow (m ³ /s)	%Q
0	9:52 AM	0.701	None	0.000	0.0000	0.000	0	0.0000	1.0000	0.0143	0.00000	0.0000	0.00
1	9:53 AM	1.067	0.6	0.247	0.6000	0.148	80	0.0143	1.0000	0.0143	0.08278	0.0012	0.25
2	9:55 AM	1.372	0.6	0.323	0.6000	0.194	80	0.1081	1.0000	0.1081	0.09848	0.0106	2.27
3	9:58 AM	1.676	0.6	0.405	0.6000	0.243	80	0.1282	1.0000	0.1282	0.12356	0.0158	3.38
4	9:59 AM	1.981	0.6	0.469	0.6000	0.282	80	0.1303	1.0000	0.1303	0.14307	0.0186	3.98
5	10:01 AM	2.286	0.2/0.6/0.8	0.555	0.2000	0.111	80	0.1336	1.0000	0.1387	0.16908	0.0235	5.01
5	10:01 AM	2.286	0.2/0.6/0.8	0.555	0.6000	0.333	80	0.1391	1.0000	0.1387	0.16908	0.0235	5.01
5	10:01 AM	2.286	0.2/0.6/0.8	0.555	0.8000	0.444	80	0.1430	1.0000	0.1387	0.16908	0.0235	5.01
6	10:06 AM	2.591	0.2/0.8	0.570	0.2000	0.114	80	0.1487	1.0000	0.1396	0.17373	0.0243	5.18
6	10:06 AM	2.591	0.2/0.8	0.570	0.8000	0.456	80	0.1305	1.0000	0.1396	0.17373	0.0243	5.18
7	10:08 AM	2.896	0.2/0.6/0.8	0.616	0.2000	0.123	80	0.1424	1.0000	0.1410	0.18766	0.0265	5.65
7	10:08 AM	2.896	0.2/0.6/0.8	0.616	0.6000	0.369	80	0.1388	1.0000	0.1410	0.18766	0.0265	5.65
7	10:08 AM	2.896	0.2/0.6/0.8	0.616	0.8000	0.493	80	0.1439	1.0000	0.1410	0.18766	0.0265	5.65
8	10:13 AM	3.200	0.2/0.8	0.664	0.2000	0.133	80	0.1374	1.0000	0.1361	0.20253	0.0276	5.89
8	10:13 AM	3.200	0.2/0.8	0.664	0.8000	0.532	80	0.1347	1.0000	0.1361	0.20253	0.0276	5.89
9	10:16 AM	3.505	0.2/0.8	0.707	0.2000	0.141	80	0.1467	1.0000	0.1343	0.21554	0.0290	6.19
9	10:16 AM	3.505	0.2/0.8	0.707	0.8000	0.566	80	0.1220	1.0000	0.1343	0.21554	0.0290	6.19
10	10:23 AM	3.810	0.2/0.8	0.732	0.2000	0.146	80	0.1369	1.0000	0.1289	0.22297	0.0287	6.14
10	10:23 AM	3.810	0.2/0.8	0.732	0.8000	0.585	80	0.1209	1.0000	0.1289	0.22297	0.0287	6.14
11	10:25 AM	4.115	0.2/0.8	0.796	0.2000	0.159	80	0.1356	1.0000	0.1336	0.24248	0.0324	6.92
11	10:25 AM	4.115	0.2/0.8	0.796	0.8000	0.636	80	0.1316	1.0000	0.1336	0.24248	0.0324	6.92
12	10:28 AM	4.420	0.2/0.8	0.811	0.2000	0.162	80	0.1359	1.0000	0.1358	0.24712	0.0336	7.17
12	10:28 AM	4.420	0.2/0.8	0.811	0.8000	0.649	80	0.1358	1.0000	0.1358	0.24712	0.0336	7.17
13	10:31 AM	4.724	0.2/0.8	0.844	0.2000	0.169	80	0.1432	1.0000	0.1401	0.25734	0.0360	7.70
13	10:31 AM	4.724	0.2/0.8	0.844	0.8000	0.675	80	0.1370	1.0000	0.1401	0.25734	0.0360	7.70
14	10:34 AM	5.029	0.2/0.8	0.869	0.2000	0.174	80	0.1356	1.0000	0.1302	0.26477	0.0345	7.36
14	10:34 AM	5.029	0.2/0.8	0.869	0.8000	0.695	80	0.1247	1.0000	0.1302	0.26477	0.0345	7.36
15	10:36 AM	5.334	0.2/0.6/0.8	0.850	0.2000	0.170	80	0.1123	1.0000	0.1202	0.25920	0.0312	6.66
15	10:36 AM	5.334	0.2/0.6/0.8	0.850	0.6000	0.510	80	0.1254	1.0000	0.1202	0.25920	0.0312	6.66
15	10:36 AM	5.334	0.2/0.6/0.8	0.850	0.8000	0.680	80	0.1179	1.0000	0.1202	0.25920	0.0312	6.66
16	10:40 AM	5.639	0.2/0.6/0.8	0.872	0.2000	0.174	80	0.1011	1.0000	0.1094	0.26570	0.0291	6.21
16	10:40 AM	5.639	0.2/0.6/0.8	0.872	0.6000	0.523	80	0.1139	1.0000	0.1094	0.26570	0.0291	6.21
16	10:40 AM	5.639	0.2/0.6/0.8	0.872	0.8000	0.697	80	0.1088	1.0000	0.1094	0.26570	0.0291	6.21
17	10:46 AM	5.944	0.2/0.6/0.8	0.860	0.2000	0.172	80	0.0832	1.0000	0.0951	0.26199	0.0249	5.32
17	10:46 AM	5.944	0.2/0.6/0.8	0.860	0.6000	0.516	80	0.0998	1.0000	0.0951	0.26199	0.0249	5.32
17	10:46 AM	5.944	0.2/0.6/0.8	0.860	0.8000	0.688	80	0.0978	1.0000	0.0951	0.26199	0.0249	5.32
18	10:50 AM	6.248	0.2/0.8	0.799	0.2000	0.160	80	0.0836	1.0000	0.0813	0.24341	0.0198	4.23
18	10:50 AM	6.248	0.2/0.8	0.799	0.8000	0.639	80	0.0790	1.0000	0.0813	0.24341	0.0198	4.23
19	10:53 AM	6.553	0.2/0.8	0.750	0.2000	0.150	80	0.0671	1.0000	0.0520	0.22854	0.0119	2.54
19	10:53 AM	6.553	0.2/0.8	0.750	0.8000	0.600	80	0.0369	1.0000	0.0520	0.22854	0.0119	2.54
20	10:56 AM	6.858	0.2/0.8	0.570	0.2000	0.114	80	0.0326	1.0000	0.0278	0.17373	0.0048	1.03
20	10:56 AM	6.858	0.2/0.8	0.570	0.8000	0.456	80	0.0230	1.0000	0.0278	0.17373	0.0048	1.03
21	10:59 AM	7.163	0.2/0.6/0.8	0.558	0.2000	0.112	80	0.0494	1.0000	0.0253	0.17001	0.0043	0.92
21	10:59 AM	7.163	0.2/0.6/0.8	0.558	0.6000	0.335	80	0.0256	1.0000	0.0253	0.17001	0.0043	0.92
21	10:59 AM	7.163	0.2/0.6/0.8	0.558	0.8000	0.446	80	0.0006	1.0000	0.0253	0.17001	0.0043	0.92
22	11:04 AM	7.468	0.6	0.274	0.6000	0.165	80	0.0000	1.0000	0.0000	0.10452	0.0000	0.00
23	11:06 AM	7.925	None	0.000	0.0000	0.000	0	0.0000		0.0000	0.00000	0.0000	0.00



Discharge Measurement Summary

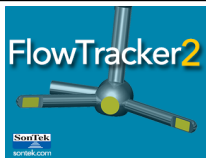
Site name Center3
Site number 04
Operator(s) VAllen
File name Center3_20230519-111102.ft
Comment

Quality Control Settings

Maximum depth change 50.00%
Maximum spacing change 100.00%
SNR threshold 10 dB
Standard error threshold 0.0100 m/s
Spike threshold 10.00%
Maximum velocity angle 20.0 deg
Maximum tilt angle 5.0 deg

Quality control warnings

St#	Time	Location (m)	Method	Depth (m)	%Depth	Measured Depth (m)	Warnings
21	10:59 AM	7.163	0.2/0.6/0.8	0.558	0.2000	0.112	Low SNR,Approaching Low SNR,SNR Threshold Variation,High % Spikes
21	10:59 AM	7.163	0.2/0.6/0.8	0.558	0.6000	0.335	Low SNR,Approaching Low SNR,SNR Threshold Variation,High % Spikes
21	10:59 AM	7.163	0.2/0.6/0.8	0.558	0.8000	0.446	Low SNR,Approaching Low SNR,SNR Threshold Variation,High % Spikes
23	11:06 AM	7.925	None	0.000	0.0000	0.000	Water Depth > QC



Discharge Measurement Summary

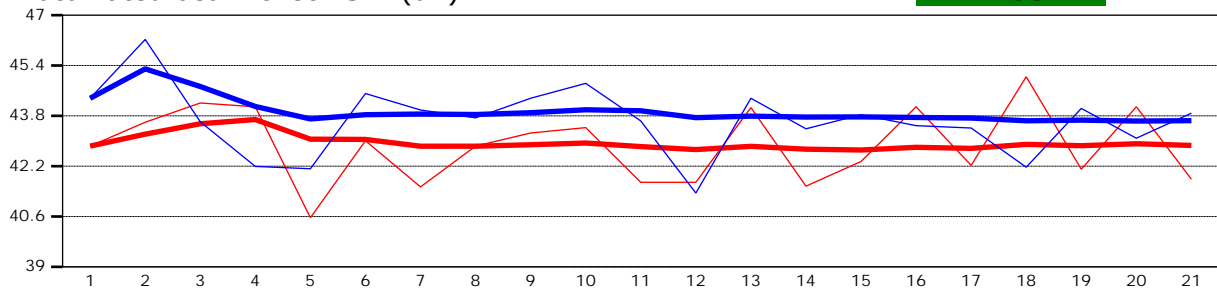
Site name Center3
Site number 04
Operator(s) VAllen
File name Center3_20230519-111102.ft
Comment

Beam 1	
Beam 2	

Automated beam check Start time 5/19/2023 9:52:10 AM

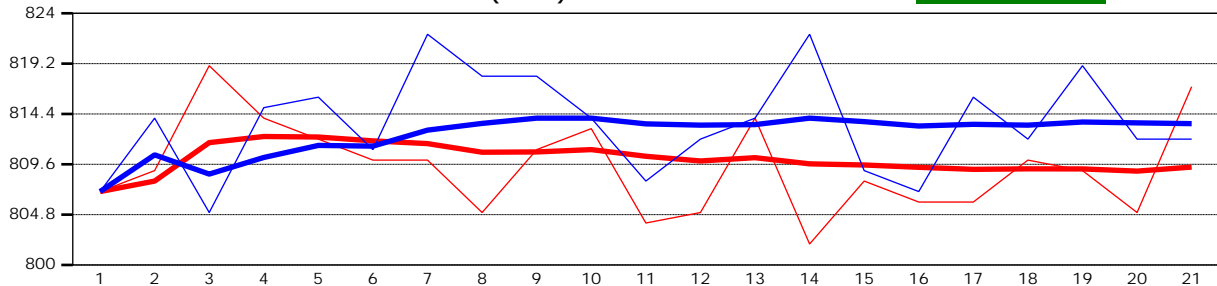
Automated beam check SNR(dB)

PASS



Automated beam check Noise level(cnts)

PASS



Automated beam check Quality control warnings

No quality control warnings



Discharge Measurement Summary

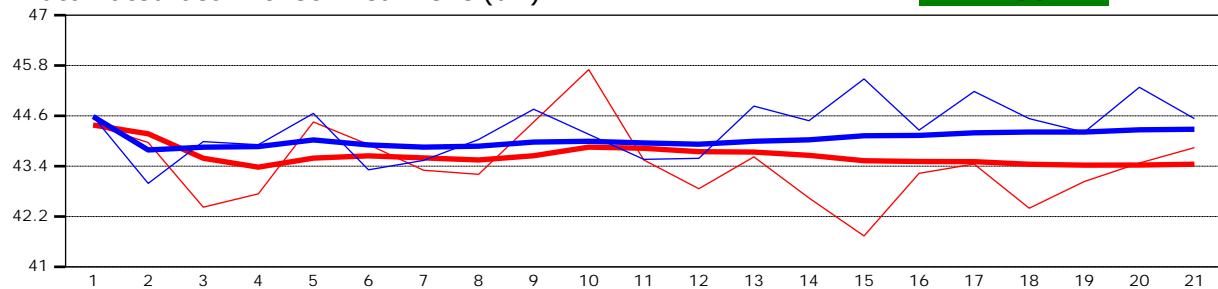
Site name Center3
Site number 04
Operator(s) VAllen
File name Center3_20230519-111102.ft
Comment

Beam 1	
Beam 2	

Automated beam check Start time 5/19/2023 9:52:10 AM

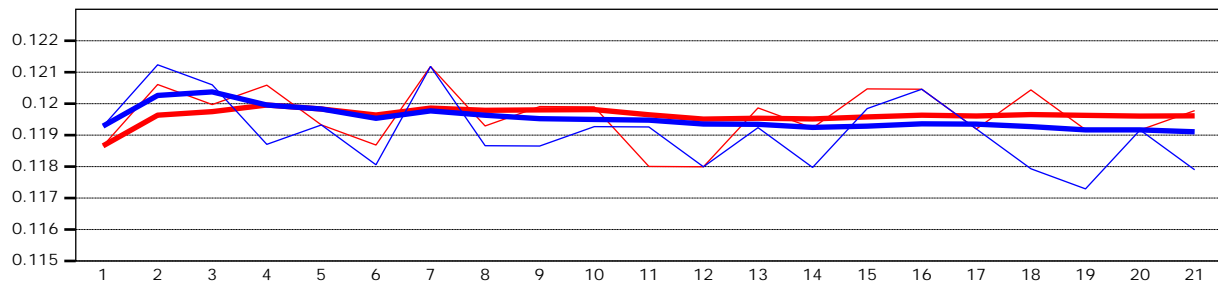
Automated beam check Peak level(dB)

PASS



Automated beam check Peak position(m)

PASS



Automated beam check Quality control warnings

No quality control warnings